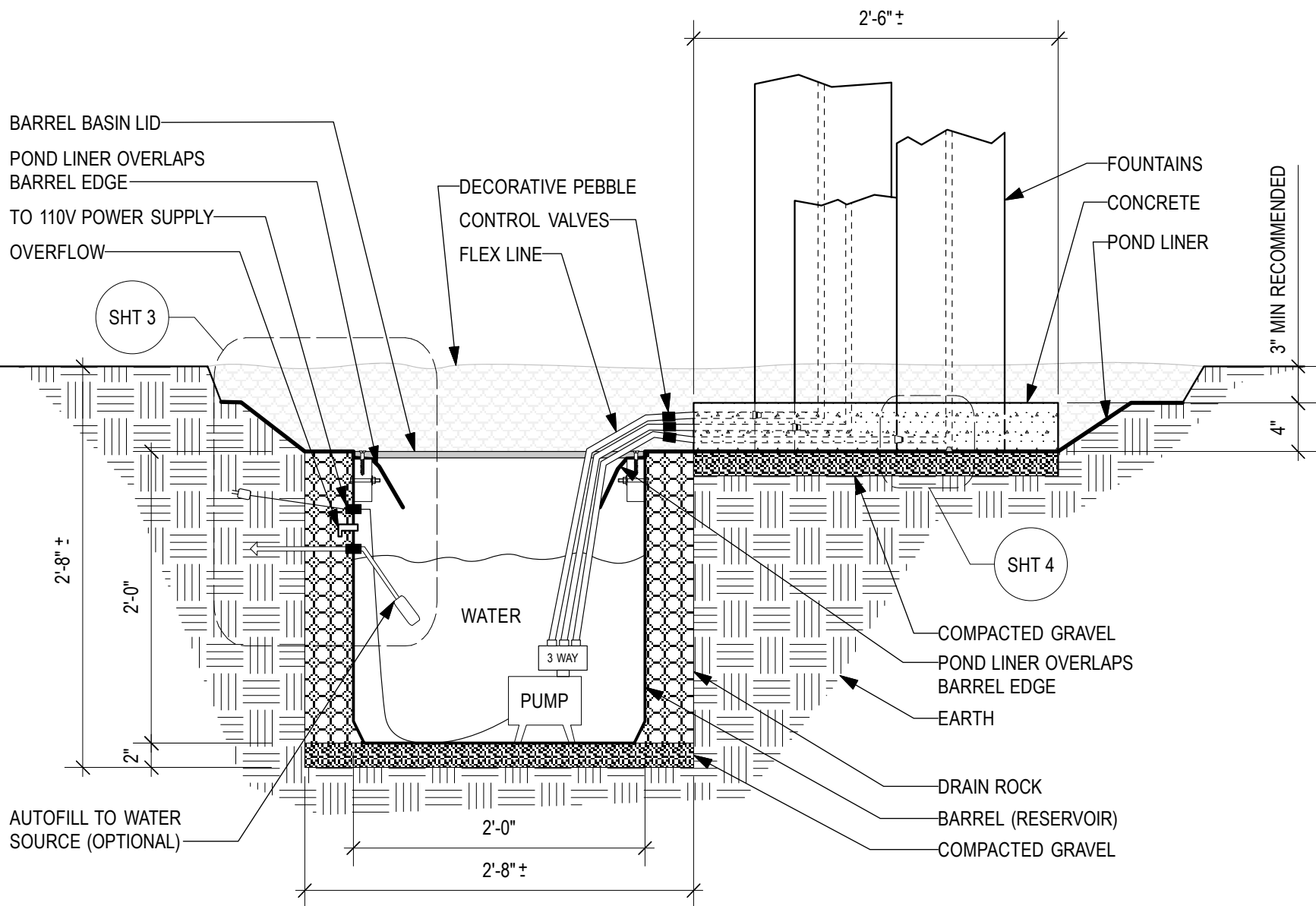
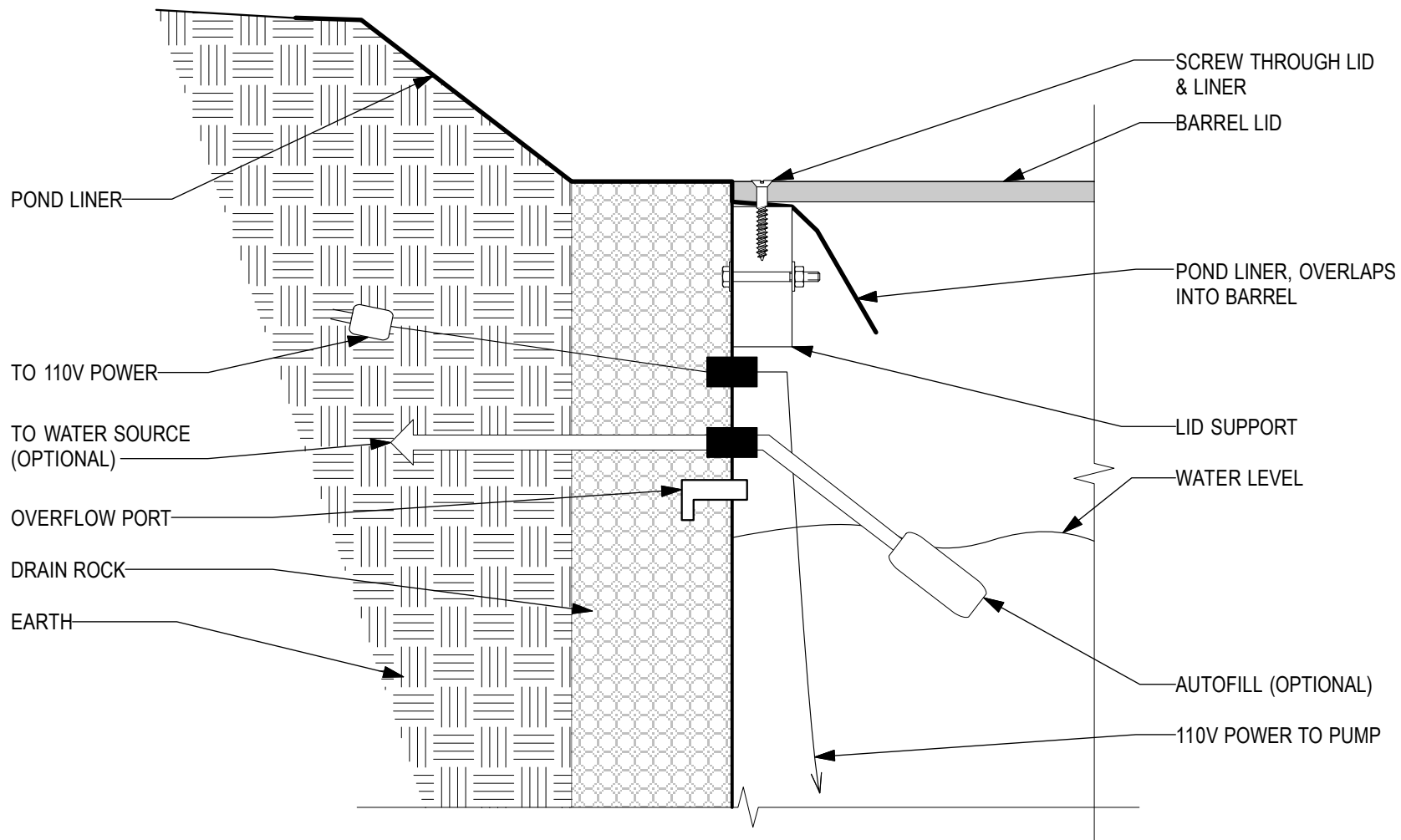


DRAWING: **BARREL BASIN SYSTEM - PLAN**

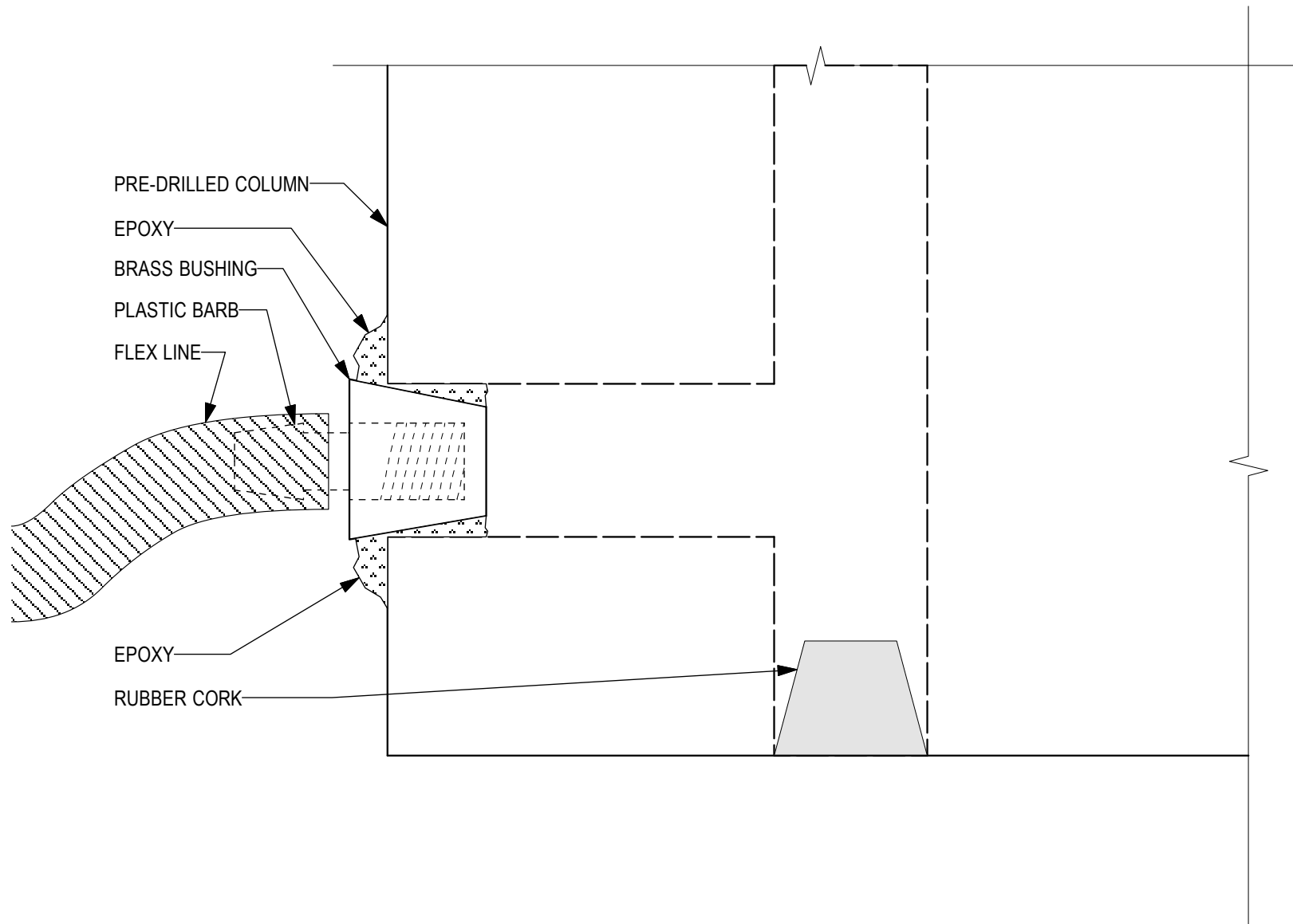
SCALE: 1/4" = 1'-0"

SHEET: 1





DRAWING:	SCALE:	SHEET:
<b>BARREL BASIN SYSTEM - DETAIL</b>	3" = 1'-0"	3



DRAWING: **BARREL BASIN SYSTEM - DETAIL**

SCALE: 1:1

SHEET: 4

## Barrel Basin System

### Parts Included:

- 24"x24" Barrel Basin w/ mounting blocks & overflow
- 1- 20" Basin Lid w/ 6 mounting screws
- 1- 10'x6' Pond Liner - EPDM 45 mil (main liner)
- 1- 3'x3' Pond Liner (extra liner under concrete and fountains)
- 1- 24" or 30" sonotube (concrete form for fountains)

### Hardware included:

- Submersible Pump
- 3way Distributor (for multiple fountain applications)
- 3 Control Valves w/ fittings
- 15' <sup>3</sup>/<sub>4</sub>" Flex Tubing
- 3 Plumb kits (for 3 fountain applications)

### Site Prep:

- Locate fountain location and mark out desired splash radius
- Dig 32" deep x 32" wide hole next to fountain base
- Dig 8" deep within entire splash radius
- Cover base of hole with compacted gravel
- Place barrel basin into hole
- Fill around barrel w/ drain rock
- Place main pond liner over entire splash radius, work into corners
- Cut 4x14" slits in liner above barrel opening (like pizza slices) . Do not over cut
- Install pump, 3 way distributor and lines for fountains
- Press basin lid into barrel, over liner, route lines through notch
- Secure basin lid to mounting blocks with screws (screw through liner)
- Place extra liner on fountain location
- Install plumb kits into fountains – as per plumb kit instructions
- Place and support fountains, hook up lines and control valves
- Cut notch in sonotube for lines and place around columns
- Weigh down sonotube as needed to prevent concrete leakage
- Cover notch with tape to prevent concrete leakage
- Mix concrete and fill sonotube to the appropriate depth
- Allow 72 hours to cure, remove sonotube
- Fill splash radius with decorative pebble and enjoy!